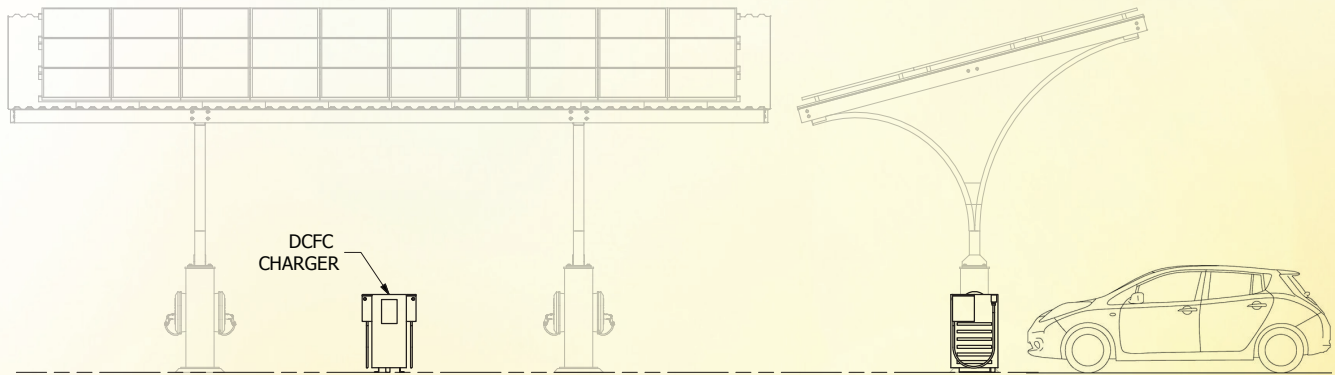
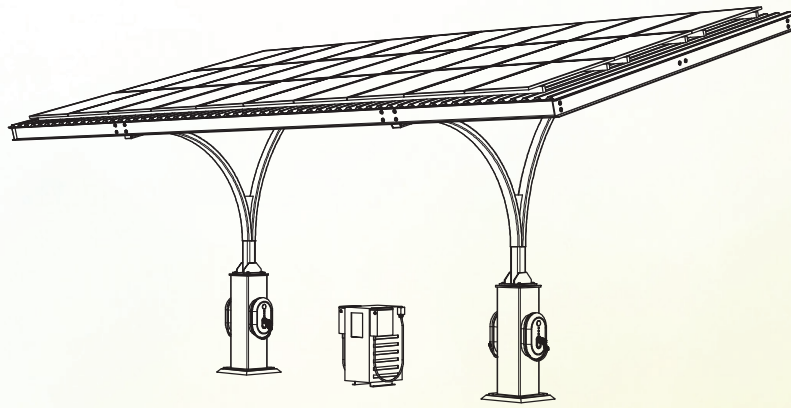


# BRIGHTFIELD DC FAST CHARGER



## TECHNICAL INFORMATION

- Note that distance from charging station to utility interconnection can impact cost due to need for longer trench or bore run and more conduit and wire.
- Typical DC Fast Charger needs a dedicated 100A@480V and 200A@208V breaker.
- Utility upgrades maybe required.
- BTS recommends that all operable charger components are mounted below 48" and that access to chargers is unobstructed for ADA access. Local codes may have additional ADA compatibility requirements.
- Networked DC Fast Chargers communication capabilities require secure WiFi, LAN or Cellular (cell fees will apply) .

## TAX CREDITS

DC Fast Chargers qualify for 30% federal alternative fueling station tax credit.\*

DC Fast Charger projects can be financed through our partnership with SparkFund. Brightfield/SparkFund clients are eligible for \$0 down financing with low rates and choice of terms subject to credit worthiness.

*\* Clients should consult their certified tax professional as to their eligibility for tax benefits and the ramifications of their participation in this activity for their unique and individualized tax circumstances.*



**Brightfield**